



MEETING: called to order by Paul Bloomquist with 36 members and guests.
Welcome New Members and welcome back Past Members!

TREASURE'S REPORT: \$11,000

OLD BUSINESS: * New "Special Awards" ribbons for the show. Look sharp!
* \$100 was donated to Light House Mission in memory of Robert "Bob" Pickens.
* Keep dahlia pictures up at sale until end to promote our variety and selection.
* Add sign-up, membership, and stuff for sale to the back tables at next sale.

NEW BUSINESS: * Membership directory 2015 to Current is in process. Will be emailed and updated yearly.
* Jean Heeringa donated the storage trailer to the club, paperwork needs to be finalized. Thank-you Jean :)
* Our 2020 show being considered for cancellation given the A.D.S. National Show, Wenatchee 2020. TBA...

FEDERATION NEWS: Workshop and Judging Classes in July. Check it out > nwdahlia.org

A.D.S. NEWS: Trial garden in Point Defiance Park, Tacoma awaits! Google it > "Point Defiance Park Dahlia"

SHOW & TELL: Jean brought some seedlings she started in Miracle Grow. Paul talked about the A.D.S. and Federation and explained the literature that pertains to each and the benefits of joining.

PROGRAM: "Dahlias 101 Panel" by Glenn, Carole, Paul, and Butch. "HOW DO YOU..."

	Glenn:	Carole:	Paul:	Butch:
PREP?	Rototill in dead stock to add organic matter and add Bone-Meal.	Sea Soil, Bayer granule insecticide, and liquid fertilizer 10-52-10.	Rototill and 16-16-16.	Cow Manure (Fall) and 10-20-20 (Spring).
PLANT?	Plants 1 tuber per spot about 4" deep.	Starts in pots in house and then transfers to garden.	Plants 4 tubers per mound about 6" deep.	Plants 1 tuber per spot about 6" deep.
STAKE?	Not really. Mounds up or "hills" the dahlia as it grows, for support.	Aluminum pole and 2 started plants per pole.	9' rows with "T" posts and string both sides.	Staked with 1 tuber per stake.



My name is ...

REFRESHMENTS:
~ June ~
Lyndsey & Madison
Russ & Wendy
Thank-Yum!

PROGRAM:
A.D.S. 2017
"New Introductions"
Presented by
Steve & Sandy Boley!

PRIZES:
White Elephant
Drawing...
Bring something and
Win something. Yaa!

NAME TAGS:
Who are you? Want a name tag?
Sign up at a meeting or email Ed at:
wcdspublicity@gmail.com

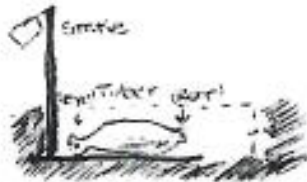
ADS Dahlia University – Planting and Staking

Conditions for growing dahlias vary, depending on local climate, soil conditions and humidity. In order to grow a beautiful dahlia garden, growers employ different strategies in order to accommodate local growing conditions. Dahlia gardens are most commonly started by the planting of tuberous roots that we call tubers. Dahlia plants result when the “eyes” on the crown of the tubers develop, causing the emergence of sprouts.

WHEN SHOULD I PLANT? In the northern hemisphere, dahlia tubers are usually planted between late April and the end of May. Before planting tubers in the ground, your soil should have attained a temperature of around 60 degrees F and all danger of frost should be past.

WHERE SHOULD I PLANT? Choose an area where your plants will get at least 6 hours of full sunlight. Morning sunlight with afternoon shade is ideal. Your soil should drain well, so that each watering is adequate to allow the plant to absorb enough moisture, but doesn't leave your soil wet and muddy. You may need to amend your soil in order to make sure that water does not pool up at the base of your plants, or get soggy around the roots. There are simple soil tests that you can do at home to determine whether your soil is rocky, sandy, loamy or predominantly clay. Sand, peat moss, and/or bagged animal fertilizers can be mixed in accordingly to lighten and loosen the texture of your soil for better drainage.

HOW DO I PLANT? Know your soil. If you grow in a moist area, where you get dew and moderate rainfall (as in the Pacific Northwest), your soil is probably adequately moist for planting. If your soil is bone dry, as it often is in areas of drought or in desert conditions, you may need to water the soil so that it is moist (not wet) before planting. Pound a dahlia stake where you plan to plant before putting your tuber in, then tag the stake with the dahlia name. Your holes should be shallow, generally about 4”-6” deep, and broad. Add your chosen additives (bone meal, alfalfa meal, granular fertilizer) to the hole and mix into the soil.



Then lay your tuber horizontally in the hole, with the eye pointing toward the stake. Cover it with soil, patting gently with your hands. Plants should be 18”-24” apart, and planted in rows about 2-3 feet apart. In regions with regular rainfall and naturally moist soil, the dahlias are not watered until they sprout. However, in hot and dry climates, you may water LIGHTLY.

Growers without a lot of garden space may decide to grow dahlias in pots and other containers. Fill the pot with a good mix of garden and untreated topsoil, plant your tubers, tag them, and water lightly until sprouts emerge. The best types of dahlias for container gardening are the low-growing and/or dwarf varieties. You will need to fertilize more than you do in your row gardens. An all-purpose fertilizer for blooming plants works well for this.

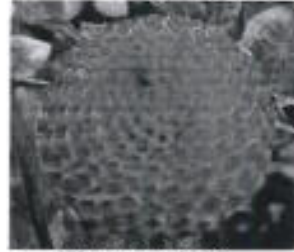
STAKING AND TYING UP YOUR DAHLIAS. As your dahlia plants grow, they will need to be secured in order to make sure they are able to support the weight of the flowers. This is usually done by tying them up to a stake with garden twine. Depending on the height of your plant, they may need to be tied up several times as they get taller. Stakes can be made of wood or metal, and should be a minimum of 4.5 – 5 feet tall.

Our courses are written by dahlia enthusiasts, not necessarily scientists or horticulturalists. These enthusiasts are pleased to share their experience and best practices with you. Please keep in mind that there are a variety of opinions in the dahlia community and that different solutions and procedures work in different circumstances and locales. We urge you to participate in a local society where you will meet great growers with knowledge of growing dahlias in your area...and you'll have fun! ©Copyright American Dahlia Society, all rights reserved.

Check Out > dahlia.org > “Dahlia University”



FEDERATION 2017
CHALLENGE BLOOM:
CHIMACUM TROY



WHATCOM 2017
CHALLENGE BLOOM:
IRISH GLOW

Whatcom County Dahlia Society is for anybody who loves dahlias! We meet the first Monday of every month except Dec. and Jan. and July is our annual BBQ on the 3rd Monday. Meetings are 7 to 9 pm at Laurel Community Grange, 6172 Guide Meridian, next to BelleWood's and across from Z's Recyclers. Refreshments served and all are welcome.

Membership has it's privileges! Want to make a few extra bucks? Members can sell at our sale (50/50) split. Inquire at wcdpublicity@gmail.com or at a meeting. Want to shop early? If you are member AND you help set up our sale at 7 a.m., you get to shop early at 9 a.m. Otherwise, you have to wait until 10 a.m. Single/family is \$8/10 respectively. Bring to meeting or mail:

Ed Thompson
4751 Birch Bay Lynden Rd. #159
Blaine, WA. 98230.

Name _____

Address _____

Phone _____

Email _____

Want your newsletter emailed? Yes _____ No _____

Single \$8 _____ Family \$10 _____



Looking Ahead...



JUNE

- 5 Whatcom Dahlia, Meeting "New Introductions", Laurel Grange, 7p.m.

JULY

- 17 Whatcom Dahlia, Potluck, Cory Wynnes, 6 p.m.
22 Federation Dahlia, Summer Workshop, Burlington Community Center, 9 a.m.
29 Federation Dahlia, Judging Classes, Burlington Community Center, 9 a.m.

AUGUST

- 5 & 6 Kitsap Dahlia, Show, Kitsap Fair
7 Whatcom Dahlia, Meeting TBA, Laurel Grange, 7p.m.
12 & 13 Grays Harbor Dahlia, Show, Grays Harbor Fairgrounds
14 ~ 19 Lynden Fair
19 & 20 Snohomish Dahlia, Show, Forest Park
26 & 27 Puget Sound Dahlia, Show, Sky Nursery
26 & 27 Portland Dahlia, Show, Oaks Amusement Park

SEPTEMBER

- 2 & 3 Washington Dahlia, Show, South Hill Mall
2 & 3 Vancouver Dahlia, Show, VanDusen Gardens
4 Whatcom Dahlia, Meeting "Staging", Laurel Grange, 7 p.m.
9 & 10 South Sound Dahlia, Show, The Barn Nursery
9 & 10 Whatcom Dahlia, Show, Bloedel-Donovan Park
16 & 17 Seattle Dahlia, Show, Lake City Community Center
16 & 17 Fraser Valley Dahlia, Show, George Preston Rec. Center
23 & 24 North Central Washington Dahlia, Show, Pybus Public Market

OCTOBER

- 2 Whatcom Dahlia, Meeting "Digging", Laurel Grange, 7 p.m.

NOVEMBER

- 6 Whatcom Dahlia, Meeting "Pie Social", Laurel Grange, 7 p.m.

For details go to: www.nwdahlia.org or www.whatcomcountydahliasociety.org.